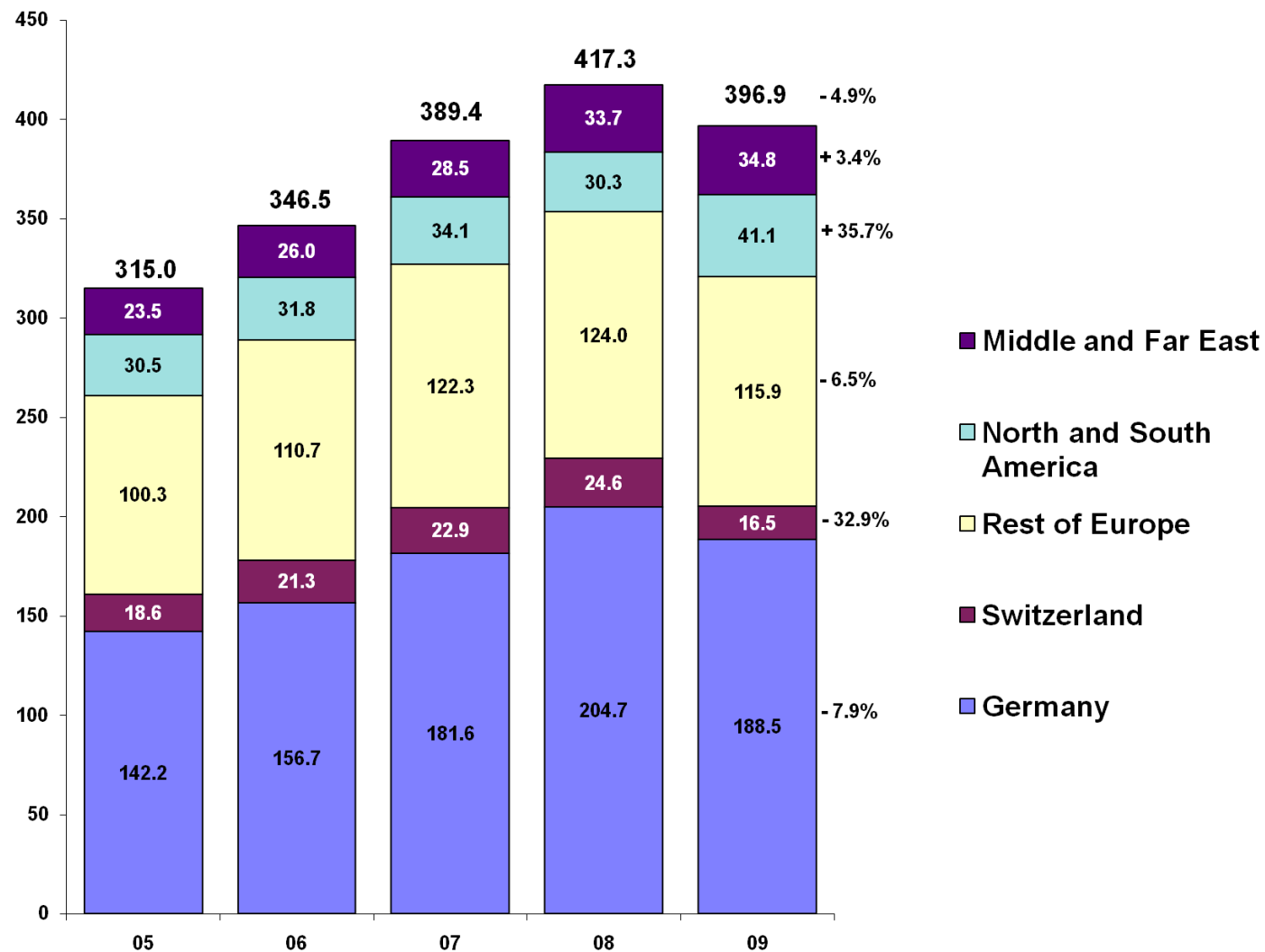


**Presentation
27 April 2010**

**Annual accounts
2009**

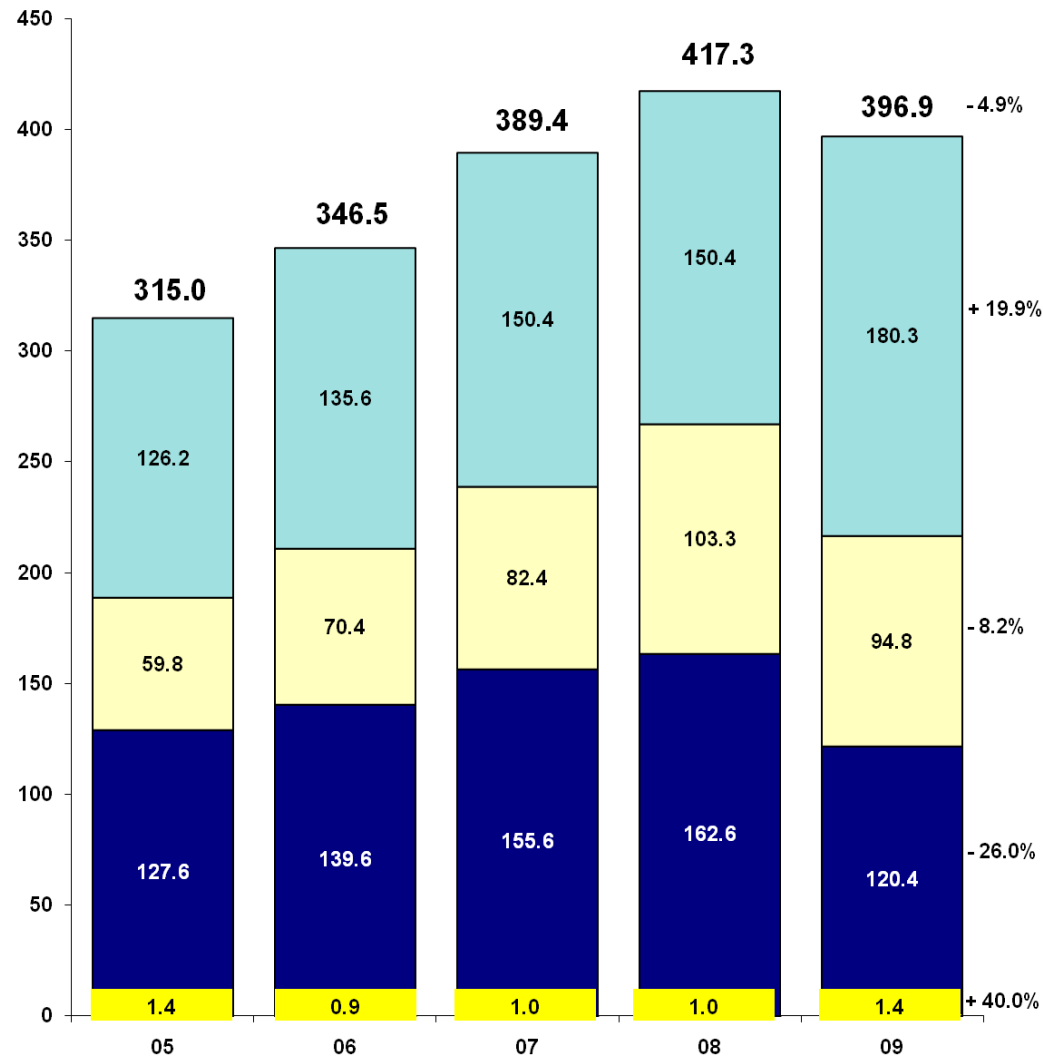
1. Consolidated gross sales by region

EUR million



2. Consolidated gross sales by division

EUR million



3. Consolidated result

EUR million

	2008	2009	Variance
Incoming orders	318.6	358.2	+12.4%
Gross sales	315.0	346.5	+10.0%
Book-to-Bill Ratio	101.2%	103.4%	
Operating cash flow	60.0	29.4	-50.9%
Operating result	42.8	13.5	-68.5%
Operating result margin	10.3%	3.4%	
Result of the period	30.6	11.6	-62.1%

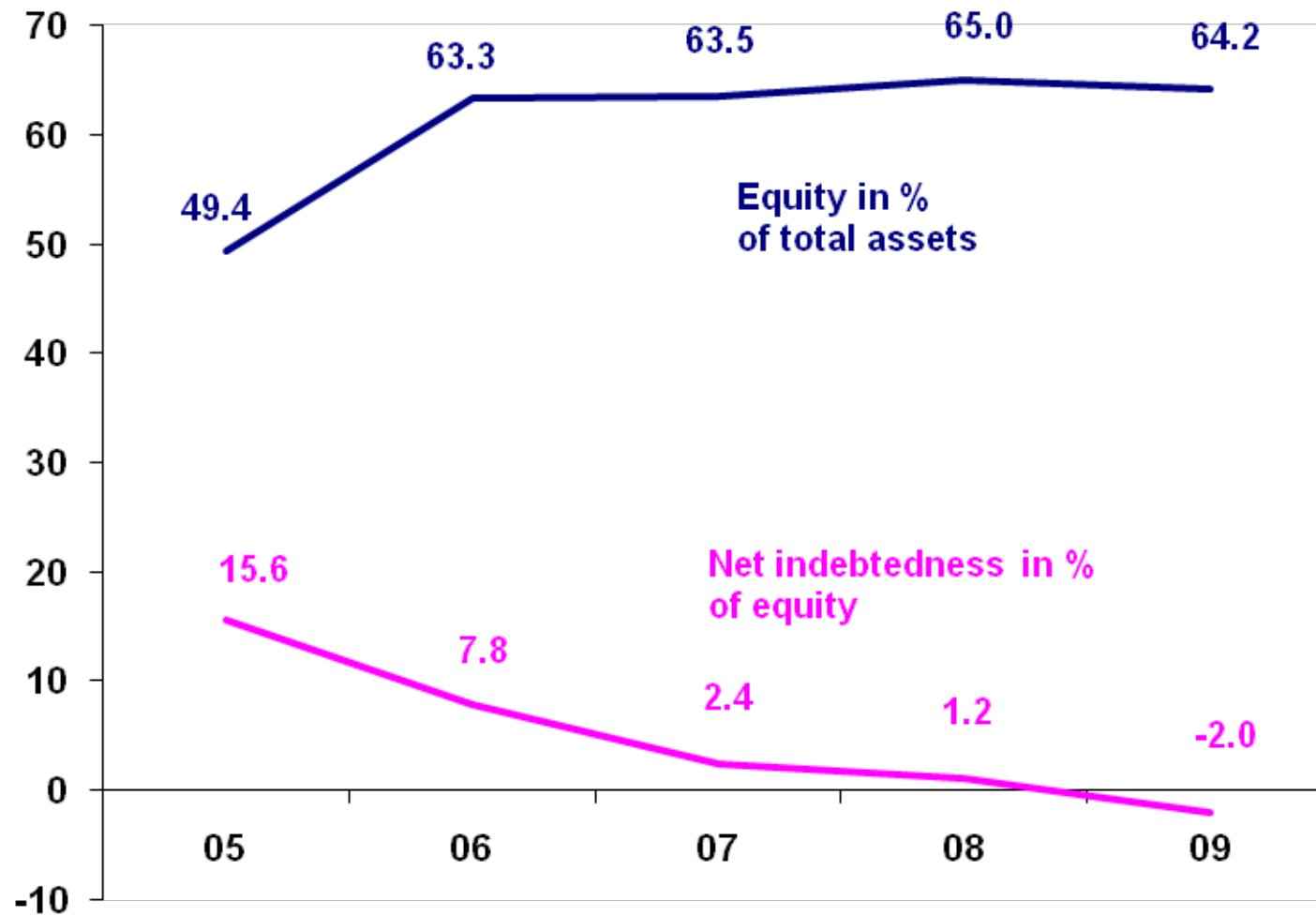
4. Results by division

EUR million

	2008	2009
Enclosures		
Operating result	33.6	17.4
Operating result margin	20.7%	14.5%
Return on capital employed	49.6%	30.4%
ELCOM/EMS		
Operating result	5.7	3.6
Operating result margin	5.5%	3.8%
Return on capital employed	11.2%	7.2%
Mechanical Components		
Operating result	6.3	-4.9 *
Operating result margin	4.2%	-2.7%
Return on capital employed	7.7%	-5.5%

* without acquired companies 2009: +1.6 EUR million

5. Equity ratio and gearing



6. Cash flow and capital expenditure

EUR million

